

**"PT-LRGB/+WLED9": 9W RGB+W LED LIGHT SOURCE AND TOUCH PANEL**

The Led light sources LRGB-LED9 Series are produced to be used with glass and pmma optical fibres.

These light sources allow you to control the emitted light and color rotation speed, creating spectacular effects through radio frequency control.

The light sources are supplied with an electronic device for connection to an unlimited number of led light sources which maintaining the color sync.

**TECHNICAL FEATURES**

9W RGB+W LED high power (red, green, blue + white)

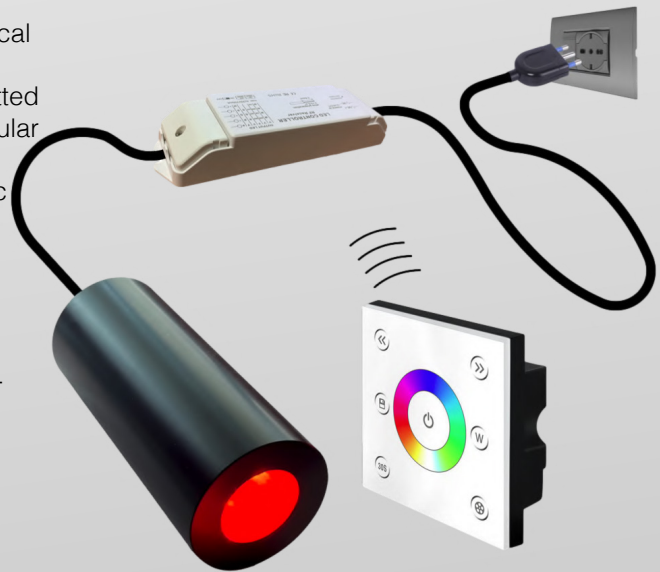
Power 9W

Fanless cooling

IP54 protection (IP65 on request)

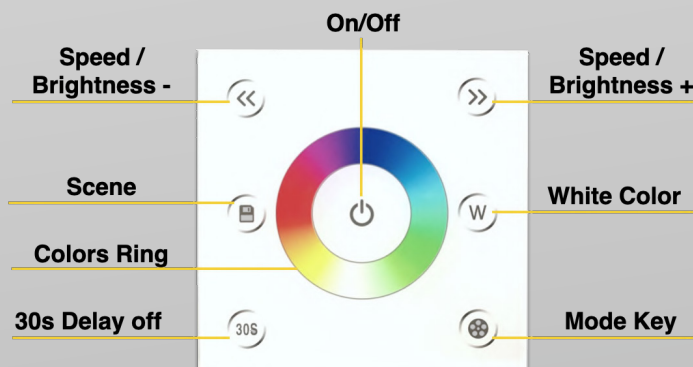
Led lifespan 50.000 hours

Supply voltage: 230V-50/60Hz



**RGB+W TOUCH PANEL COLOR REMOTE CONTROL**

**TOUCH PANEL FUNCTIONS**



**ON/OFF :**

- on or off for any function

**PROGRAMS :**

- 10 programs

**SPEED / BRIGHTNESS + :**

- the speed / brightness will increase speed or brightness when you touch the key each time

**SPEED / BRIGHTNESS - :**

- the speed / brightness will decrease speed or brightness when you touch the key each time

**COLOR RING :**

- touch and choose any color which you want

**WHITE COLOR BUTTON**

- button to turn on the white color led

**"PT-LRGB/LED9" SYSTEM'S COMPONENTS**

**9W RGB+W LED LIGHT SOURCE**



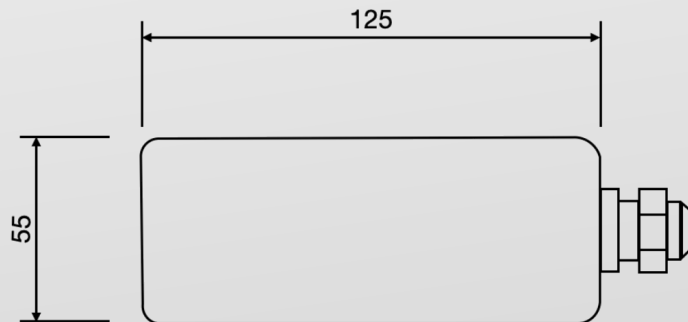
**R.F. RECEIVER MODULE**



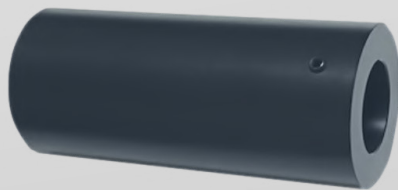
**R.F. TOUCH PANEL**



**DIMENSIONS**



**LED LIGHT SOURCE - FIBRE OPTIC BUNDLE CONNECTION**



**9W RGB+W LED LIGHT SOURCE**



**COMMON END**

**FIBRE OPTIC BUNDLE**



**INSERT THE COMMON END IN THE LIGHT SOURCE AND BLOCK IT THROUGH THE SCREW SET ON THE LIGHT SOURCE**