

"LWH-LED9+RF" SYSTEM : LED WHITE SOURCE WITH RF REMOTE CONTROL

The Led light sources "Led LWH" Series are produced to be used with glass and pmma optical fibers.

The "LWH" are available with three different white color temperatures:
warm white 3000° k
natural white light 4000° k
cold white 5500° k

The led white light sources are provided with a power supply to be connected directly to 110-240VAC.

TECHNICAL FEATURES

- 9W white LED high power
- Fanless cooling
- IP54 protection (IP65 on request)
- Led lifespan 50.000 hours
- Supply voltage: 230V-50/60Hz
(Supply voltage on request : 12V or 24V)

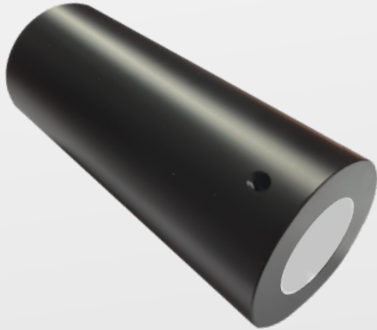


"LWH-LED9+RF" SYSTEM'S COMPONENTS

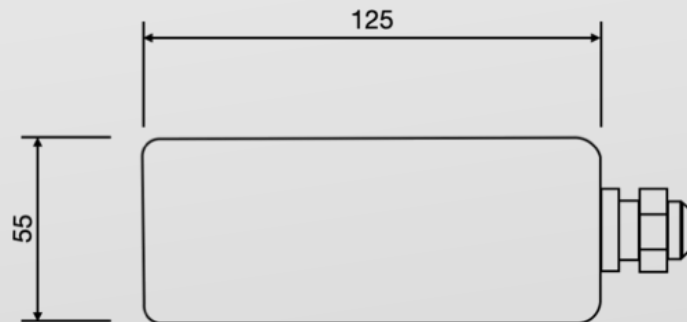
9W WHITE LED LIGHT SOURCE

RECEIVER MODULE
RF SIGNAL

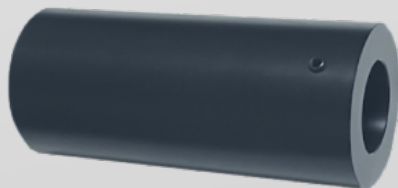
RF REMOTE CONTROL



DIMENSIONS



LED LIGHT SOURCE - FIBER OPTICS BUNDLE CONNECTION



9W LED LIGHT SOURCE



COMMON END FIBER OPTICS BUNDLE



INSERT THE COMMON END IN THE LIGHT SOURCE AND BLOCK IT THROUGH THE SCREW SET ON THE LIGHT SOURCE

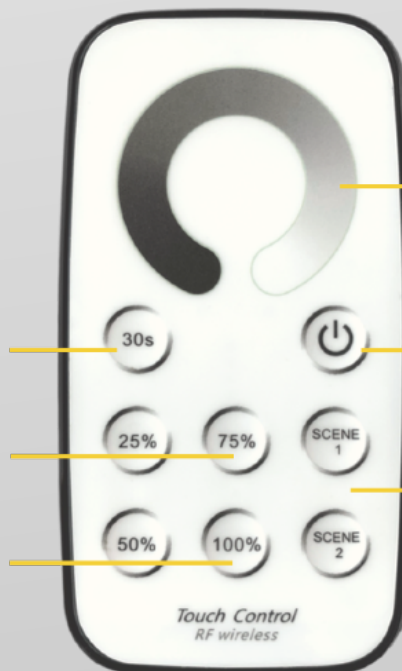
THE "LWH-LED9+RF" ILLUMINATOR SYSTEM WITH RF REMOTE CONTROL



RF REMOTE CONTROL FUNCTIONS

light turn off
delayed by 30
seconds

nr. 4 buttons
light intensity
already set



touch ring
light intensity
adjustment

on/off

nr. 2 buttons
to memorize
light intensity
desired