***"BUTTON-LRGB/LED9": 9W RGB LED LIGHT SOURCE COLOR CONTROL BUTTON***

The Led light sources LRGB-LED9 Series are produced to be used with glass and pmma optical fibers.

These light sources allow you to control the emitted light and color rotation speed, creating spectacular effects through radio frequency control.

The light sources are supplied with an electronic device for connection to an unlimited number of led light sources which maintaining the color sync.

TECHNICAL FEATURES

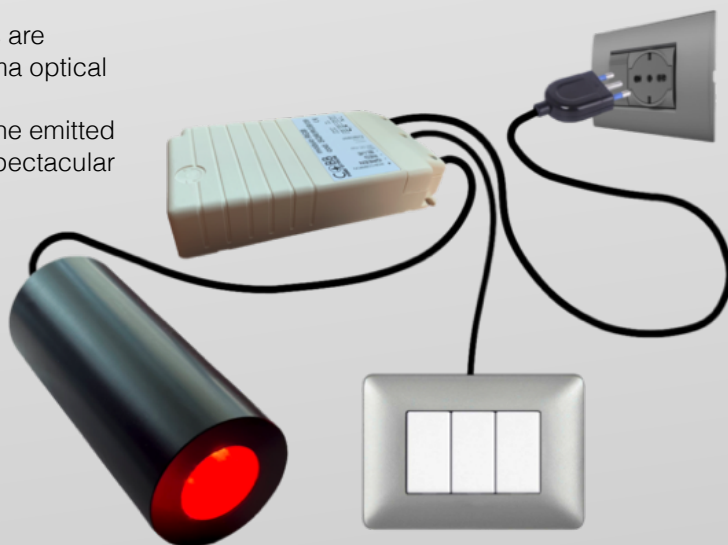
9W RGB LED high power

Fanless cooling

IP54 protection (IP65 on request)

Led lifespan 50.000 hours

Supply voltage: 230V-50/60Hz

***RGB COLOR CONTROL BUTTON*****COLOR CONTROL BUTTON FUNCTIONS**

One push-button to control all functions

SHORT PUSH :

- switch on or switch off

LONG PUSH :

- color selection / automatic color rotation starts after 20 seconds

TWO SHORT PUSHES :

- fixed color choice in automatic color rotation program

"BUTTON-LRGB/LED9" SYSTEM'S COMPONENTS

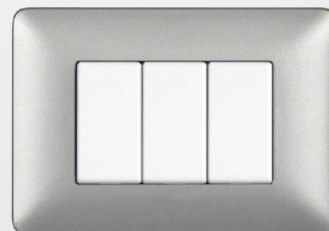
9W RGB LIGHT SOURCE



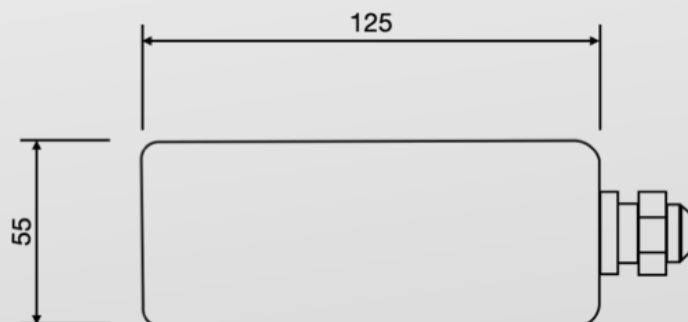
COLOR CONTROL MODULE



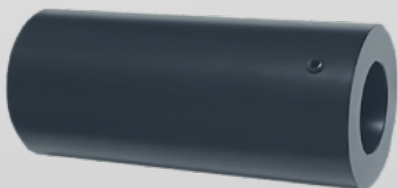
BUTTON FOR COLOR CONTROL
(button not included in the supply)



DIMENSIONS



LED LIGHT SOURCE - FIBRE OPTIC BUNDLE CONNECTION



9W LED LIGHT SOURCE



COMMON END - FIBER OPTIC BUNDLE



INSERT THE COMMON END IN THE LIGHT SOURCE AND BLOCK IT
THROUGH THE SCREW SET ON THE LIGHT SOURCE